

SAVE THE DATE

Pretzels and endplates: Motor neuron pathology and the role of SMN in motor neuron development

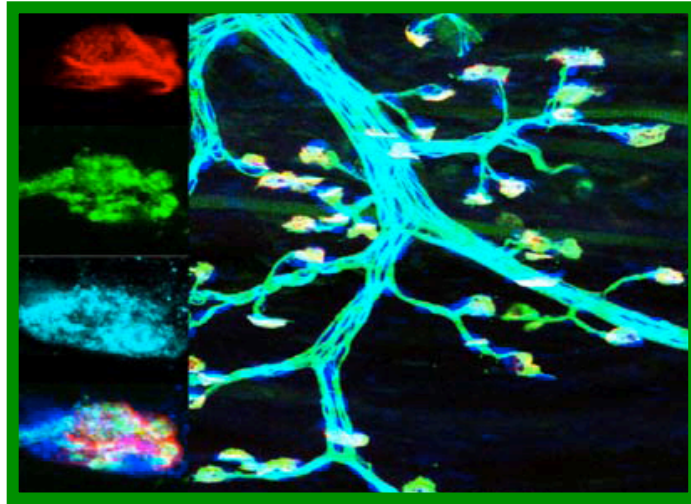


Image: Ling et al, PloS One, NMJs in hindlimb muscles of SMND7 mice that express YFP in motor neurons

Monday November 14, 2011

6:30 – 9:30 p.m.

Washington Convention Center, 150B

Chien-Ping Ko, PhD, University of Southern California

"Synaptic defects in the spinal and neuromuscular circuitry in SMA"

George Mentis, PhD, Columbia University

"Functional and structural impairments in spinal cord circuitry in a mouse model of SMA"

Charlotte Sumner, MD, Johns Hopkins University

"Disruptions of motor neurons, their axons, and target muscles in human SMA"

Sponsored by: Families of SMA, Fight SMA, MDA, SMA Foundation

This event is not sponsored by the Society of Neuroscience.